



ROOF MOUNTED FANS

HGHT-V Series, Axial Flow Fans



Officially approved to EN12101-3 standard (certificate number 0370-CPD-0909)



Officially approved to EN12101-3 standard (certificate number 0370-CPD-0923)

Range of roof mounted axial flow fans, with vertical air discharge configuration, for air extract. Designed for smoke extraction in fire conditions and certified F400-120 and F300-120 (HGHT-V - CE marked).

Casing formed from rolled sheet steel welded on the base with a corrosion resistant hot dipped galvanized finish.

High grade die-cast aluminum blades locked within a pressed sheet steel hub.

Backdraft shutter and proof guard at the fan discharge. Cylindrical casing formed from rolled sheet steel protected against corrosion by grey polyester paint coating.

Motors

- HGHT-V F400 120: three-phase 4 pole motors 400V 50Hz, IP55, class H insulation
- HGHT-V: F300 120: three-phase 4 pole motors 400V 50Hz, IP55, class H insulation
- Electrical isolator fitted to fan casing. Three phase 230/400V-50Hz up to 3 kW. Three phase 400V-50Hz, for higher power motors and two speed motors. (See characteristics chart).

Additional Information

Standard air direction: form (A) configuration (Motor over impeller).

On request

- 6 pole motors.
- 2 speed motors 4/6 and 4/8 poles.

APPLICATIONS



Parkings



Isolator



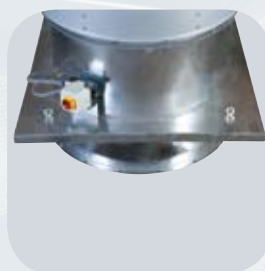
Electrical isolator

Outlet guard



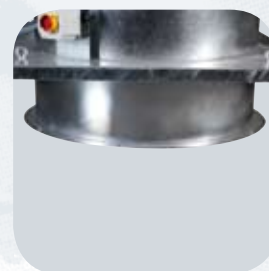
Outlet guard protection

Support base



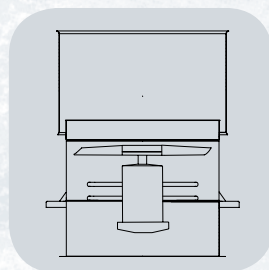
Base for roof installation

Inlet flange



Flange for duct connection or bellmouth inlet

Form (A) configuration



Standard air direction: form (A) configuration (Motor over impeller)

Web support



To strengthen base support. Model 1250 only

Back draft shutter



Prevent back draft of air and entrance of rain water when the fan is switched off

HGHT-V

Roof mounted fans

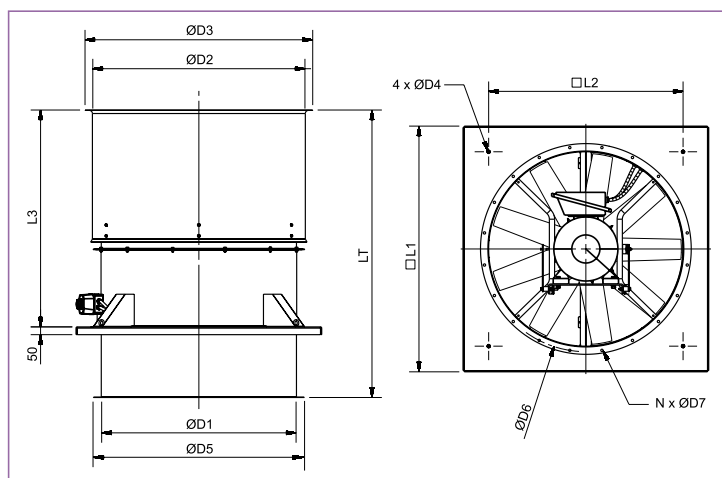
■ Technical characteristics

Before installation check that the product electrical characteristics listed on the data plate label (Voltage, power, frequency etc) match those of the intended electrical supply.

Model F300120 F400120	Motor Power (kW)	Full load current (A)		Weight (kg)	Model F300120 F400120	Motor Power (kW)	Full load current (A)		Weight (kg)
		230V	400V				230V	400V	
HGHT-V/4-800-3/-1,1	1,1	4,52	2,61	198	HGHT-V/4-1000-6/-4	4	-	8,18	287
HGHT-V/4-800-3/-1,5	1,5	5,7	3,29	200	HGHT-V/4-1000-6/-5,5	5,5	-	11	303
HGHT-V/4-800-3/-2,2	2,2	8,23	4,75	208	HGHT-V/4-1000-6/-7,5	7,5	-	14,2	310
HGHT-V/4-800-3/-3	3	11,2	6,47	210	HGHT-V/4-1000-6/-11	11	-	22,1	355
HGHT-V/4-800-3/-4	4	-	8,18	223	HGHT-V/4-1000-6/-15	15	-	29,1	362
HGHT-V/4-800-3/-5,5	5,5	-	11	239	HGHT-V/4-1000-6/-18,5	18,5	-	35,1	420
HGHT-V/4-800-6/-1,5	1,5	5,7	3,29	200	HGHT-V/4-1000-6/-22	22	-	41	425
HGHT-V/4-800-6/-2,2	2,2	8,23	4,75	208	HGHT-V/4-1000-9/-5,5	5,5	-	11	303
HGHT-V/4-800-6/-3	3	11,2	6,47	210	HGHT-V/4-1000-9/-7,5	7,5	-	14,2	310
HGHT-V/4-800-6/-4	4	-	8,18	223	HGHT-V/4-1000-9/-11	11	-	22,1	355
HGHT-V/4-800-6/-5,5	5,5	-	11	239	HGHT-V/4-1000-9/-15	15	-	29,1	362
HGHT-V/4-800-6/-7,5	7,5	-	14,2	246	HGHT-V/4-1000-9/-18,5	18,5	-	35,1	420
HGHT-V/4-800-9/-2,2	2,2	8,23	4,75	208	HGHT-V/4-1000-9/-22	22	-	41	425
HGHT-V/4-800-9/-3	3	11,2	6,47	210	HGHT-V/4-1000-9/-30	30	-	56	488
HGHT-V/4-800-9/-4	4	-	8,18	223	HGHT-V/4-1250-6/-15	15	-	29,1	497
HGHT-V/4-800-9/-5,5	5,5	-	11	239	HGHT-V/4-1250-6/-18,5	18,5	-	35,1	555
HGHT-V/4-800-9/-7,5	7,5	-	14,2	246	HGHT-V/4-1250-6/-22	22	-	41	560
HGHT-V/4-900-6/-3	3	11,2	6,47	262	HGHT-V/4-1250-6/-30	30	-	56	623
HGHT-V/4-900-6/-4	4	-	8,18	275	HGHT-V/4-1250-6/-37	37	-	67,4	656
HGHT-V/4-900-6/-5,5	5,5	-	11	291	HGHT-V/4-1250-9/-15	15	-	29,1	497
HGHT-V/4-900-6/-7,5	7,5	-	14,2	298	HGHT-V/4-1250-9/-18,5	18,5	-	35,1	555
HGHT-V/4-900-6/-11	11	-	22,1	343	HGHT-V/4-1250-9/-22	22	-	41	560
HGHT-V/4-900-6/-15	15	-	35,1	350	HGHT-V/4-1250-9/-30	30	-	56	623
HGHT-V/4-900-9/-4	4	-	8,18	275	HGHT-V/4-1250-9/-37	37	-	67,4	731
HGHT-V/4-900-9/-5,5	5,5	-	11	291					
HGHT-V/4-900-9/-7,5	7,5	-	14,2	298					
HGHT-V/4-900-9/-11	11	-	22,1	343					
HGHT-V/4-900-9/-15	15	-	29,1	350					
HGHT-V/4-900-9/-18,5	18,5	-	35,1	408					

We reserve right to supply different motors and hence data may change.

■ Dimensions (mm)



HGHT-V	D1	D2	D3	D4	D5	D6	D7	N	L1	L2	L3	LT
800	800	912	1012	14	890	860	12	16	1100	840	1015	1198
900	900	1013	1113	14	1005	970	15	16	1250	950	1135	1463
1000	1000	1113	1213	14	1105	1070	15	16	1270	950	1215	1543
1250	1250	1364	1464	16	1355	1320	15	20	1580	1250	1394	1848





Performance curves

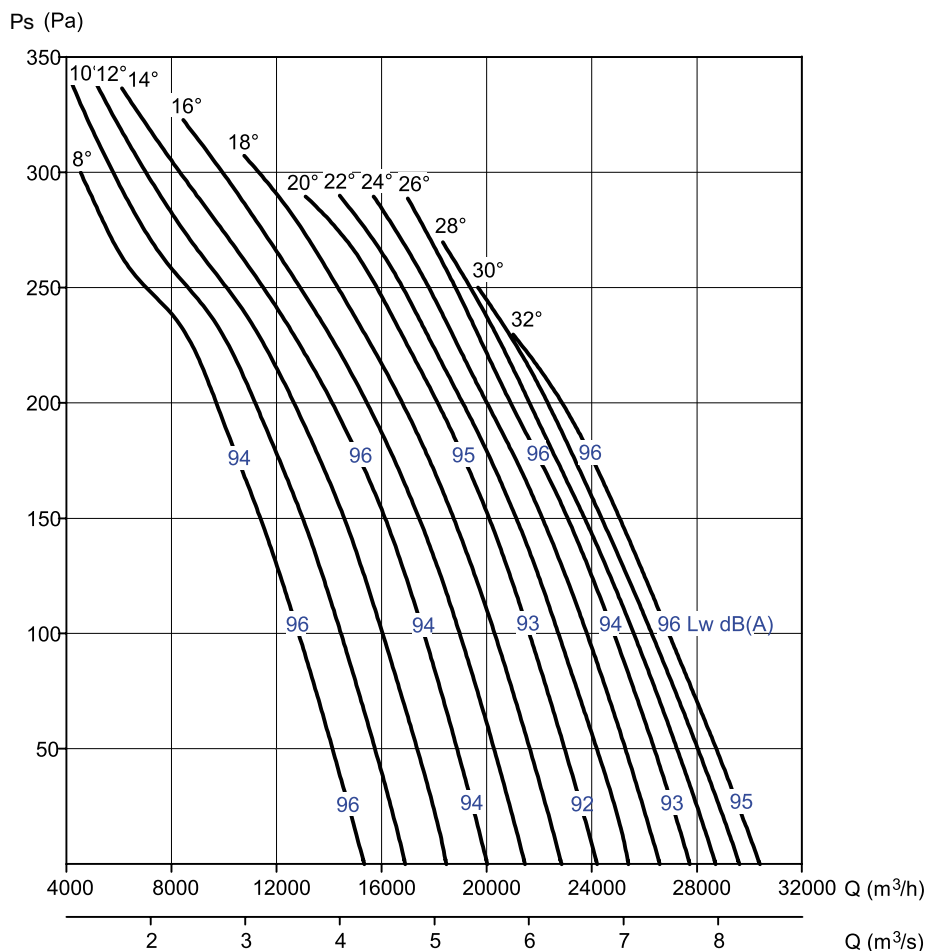
- Q = Air volume in m³/h and m³/s.
- Ps = Static pressure in Pa.
- Dry air at 20 °C and 760 mmHg.
- Performance data in accordance with ISO 5801 and AMCA 210-99 Standards

HGTT-V / HGHT-V

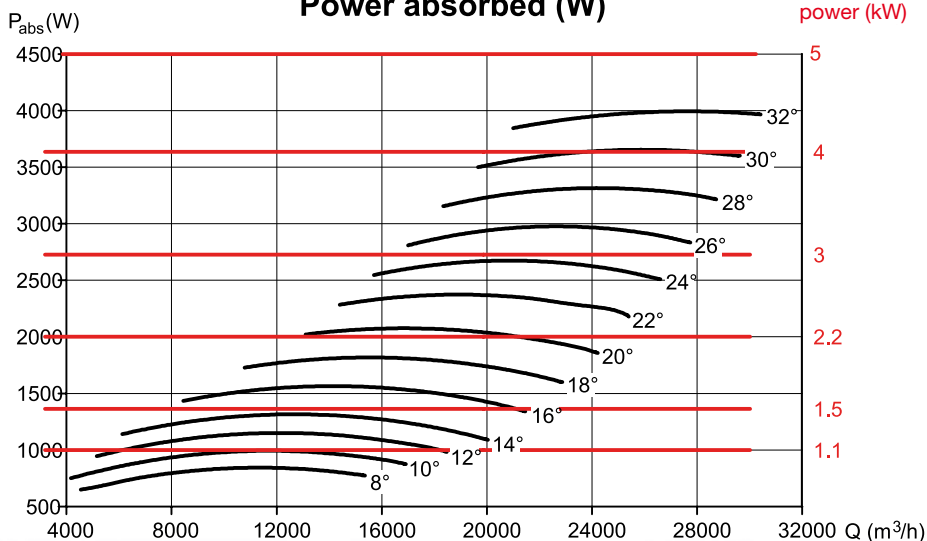
Number of poles	4
Nominal diameter (mm)	800
Number of blades	3

Hz	K
63	20
125	19
250	11
500	5
1000	5
2000	7
4000	13
8000	20

Table of correction factors for the calculation of the sound power level spectrum.



Power absorbed (W)



HGHT-V

Roof mounted fans



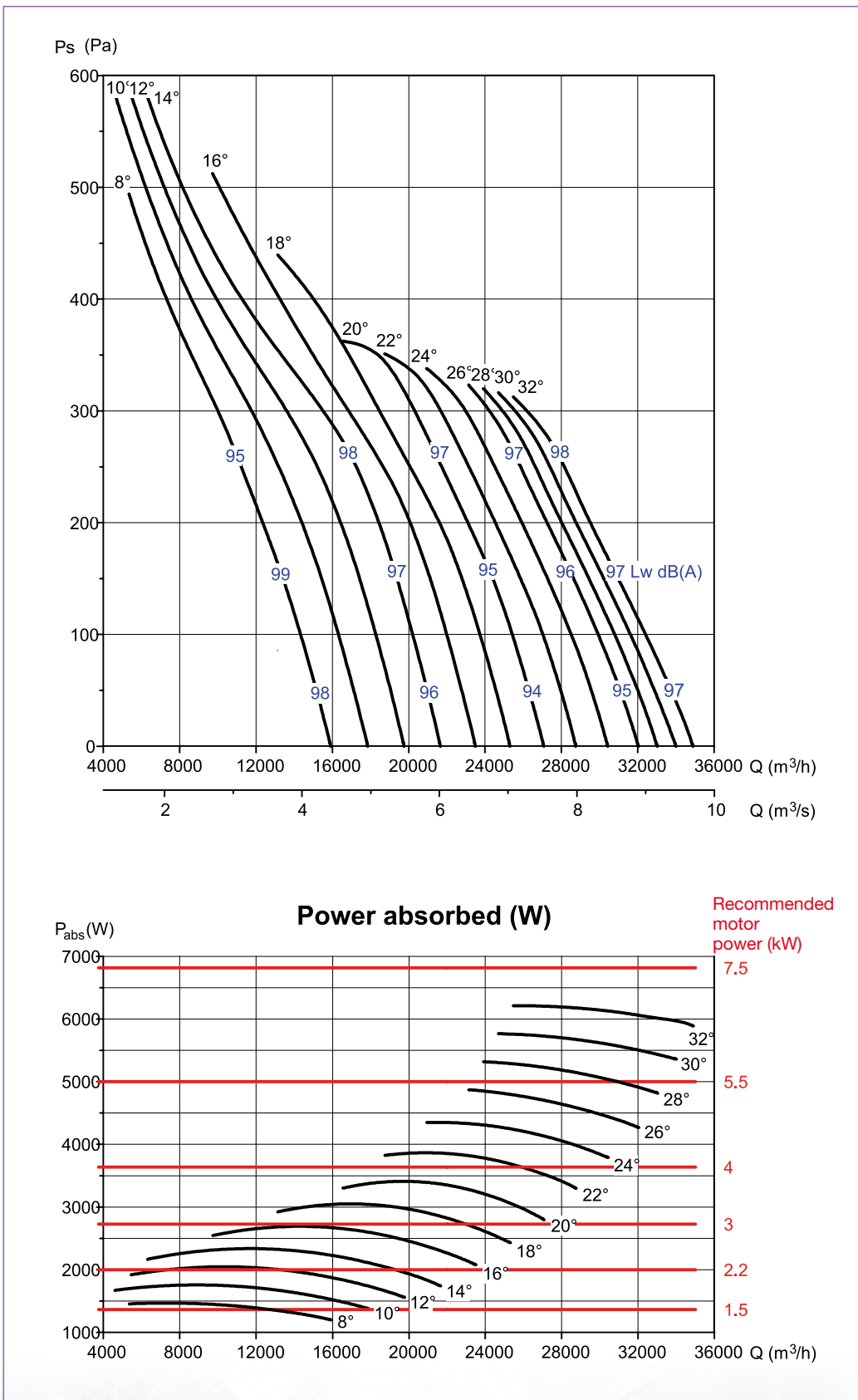
■ Performance curves

- Q = Air volume in m³/h and m³/s.
- Ps = Static pressure in Pa.
- Dry air at 20 °C and 760 mmHg.
- Performance data in accordance with ISO 5801 and AMCA 210-99 Standards

HGTT-V / HGHT-V	
Number of poles	4
Nominal diameter (mm)	800
Number of blades	6

Hz	K
63	38
125	21
250	9
500	5
1000	5
2000	8
4000	14
8000	23

Table of correction factors for the calculation of the sound power level spectrum.



Performance curves

- Q = Air volume in m³/h and m³/s.
- Ps = Static pressure in Pa.
- Dry air at 20 °C and 760 mmHg.
- Performance data in accordance with ISO 5801 and AMCA 210-99 Standards

HGTT-V / HGHT-V

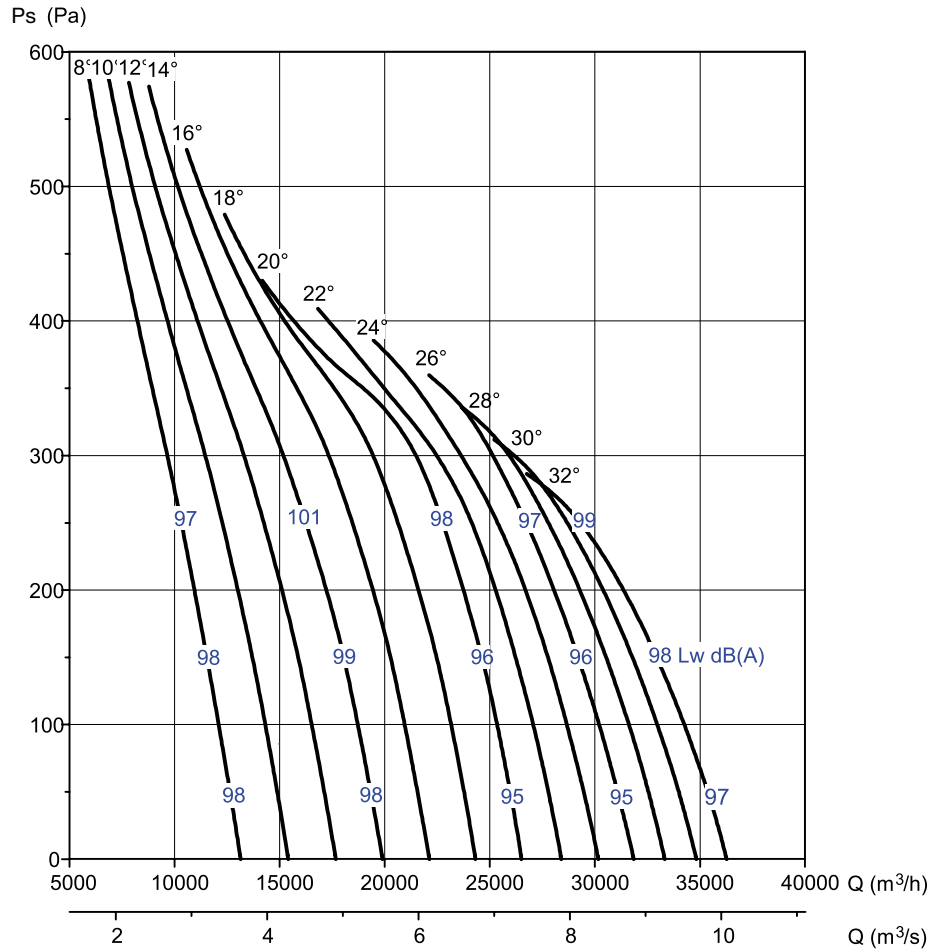
Number of poles	4
Nominal diameter (mm)	800
Number of blades	9

Hz	K
63	38
125	19
250	9
500	5
1000	5
2000	7
4000	13
8000	21

HGHT-V

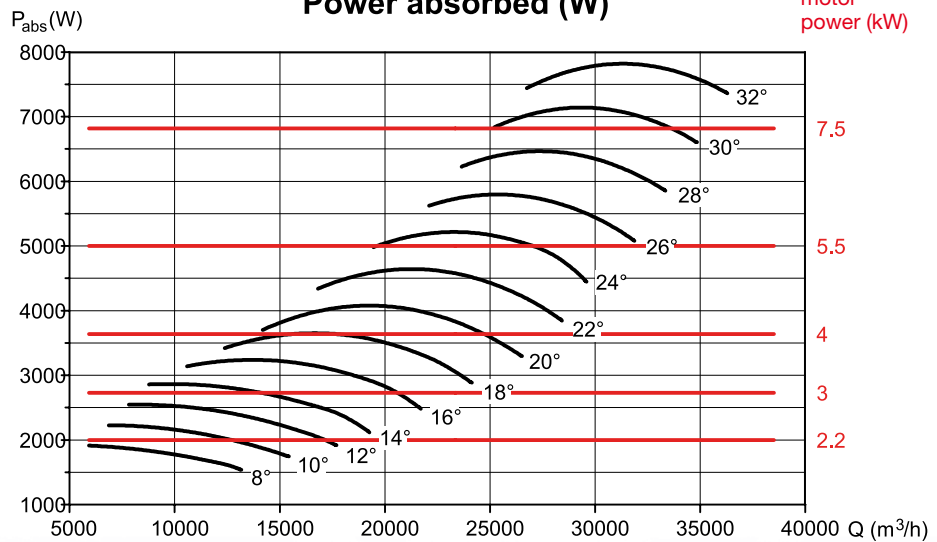
Roof mounted fans

Table of correction factors for the calculation of the sound power level spectrum.



Power absorbed (W)

Recommended motor power (kW)



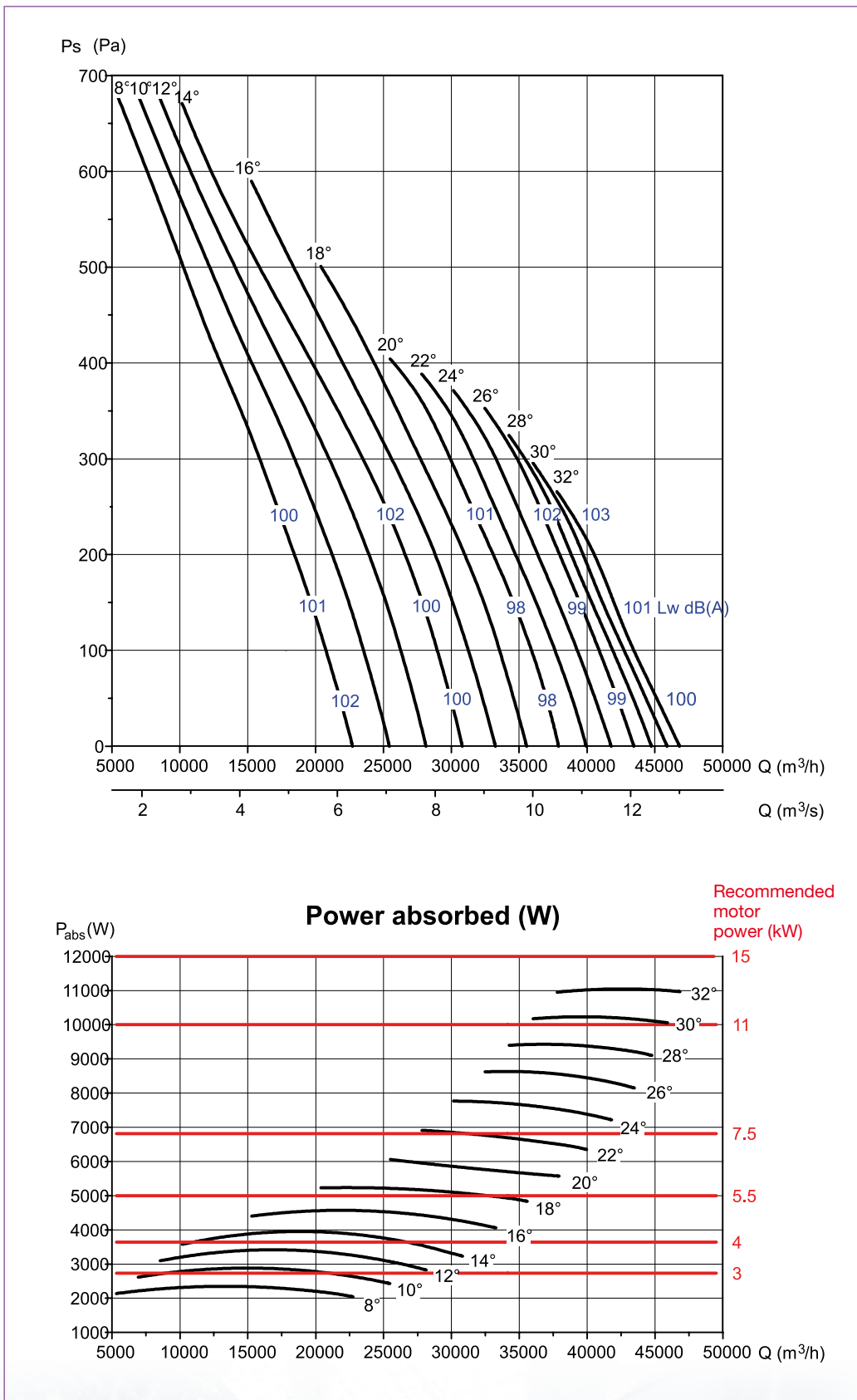
Performance curves

- Q = Air volume in m³/h and m³/s.
- Ps = Static pressure in Pa.
- Dry air at 20 °C and 760 mmHg.
- Performance data in accordance with ISO 5801 and AMCA 210-99 Standards

HGTT-V / HGHT-V	
Number of poles	4
Nominal diameter (mm)	900
Number of blades	6

Hz	K
63	38
125	21
250	9
500	5
1000	5
2000	8
4000	14
8000	23

Table of correction factors for the calculation of the sound power level spectrum.



Performance curves

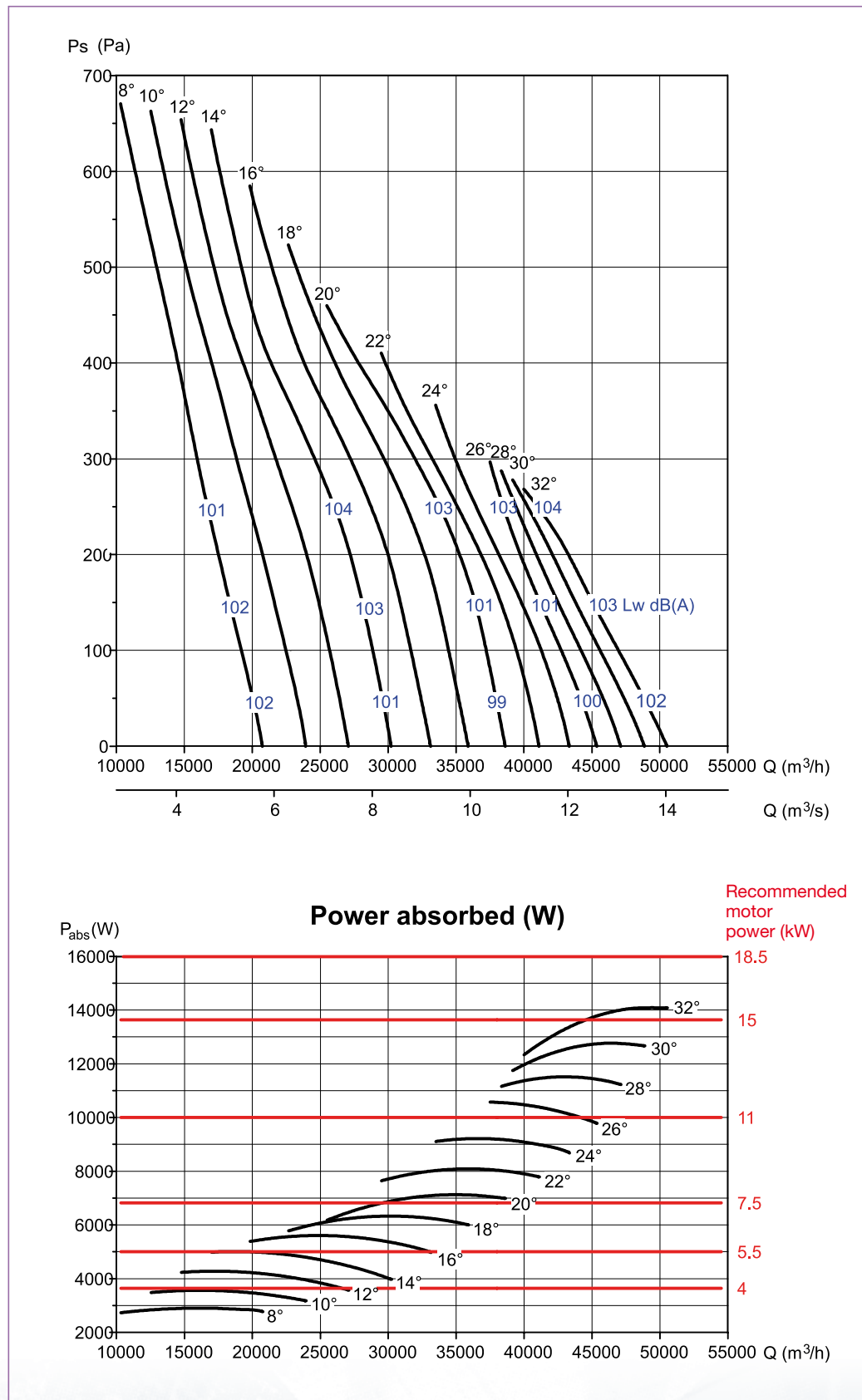
- Q = Air volume in m³/h and m³/s.
- Ps = Static pressure in Pa.
- Dry air at 20 °C and 760 mmHg.
- Performance data in accordance with ISO 5801 and AMCA 210-99 Standards

HGTT-V / HGHT-V

Number of poles	4
Nominal diameter (mm)	900
Number of blades	9

Hz	K
63	38
125	21
250	9
500	5
1000	5
2000	8
4000	14
8000	23

Table of correction factors for the calculation of the sound power level spectrum.



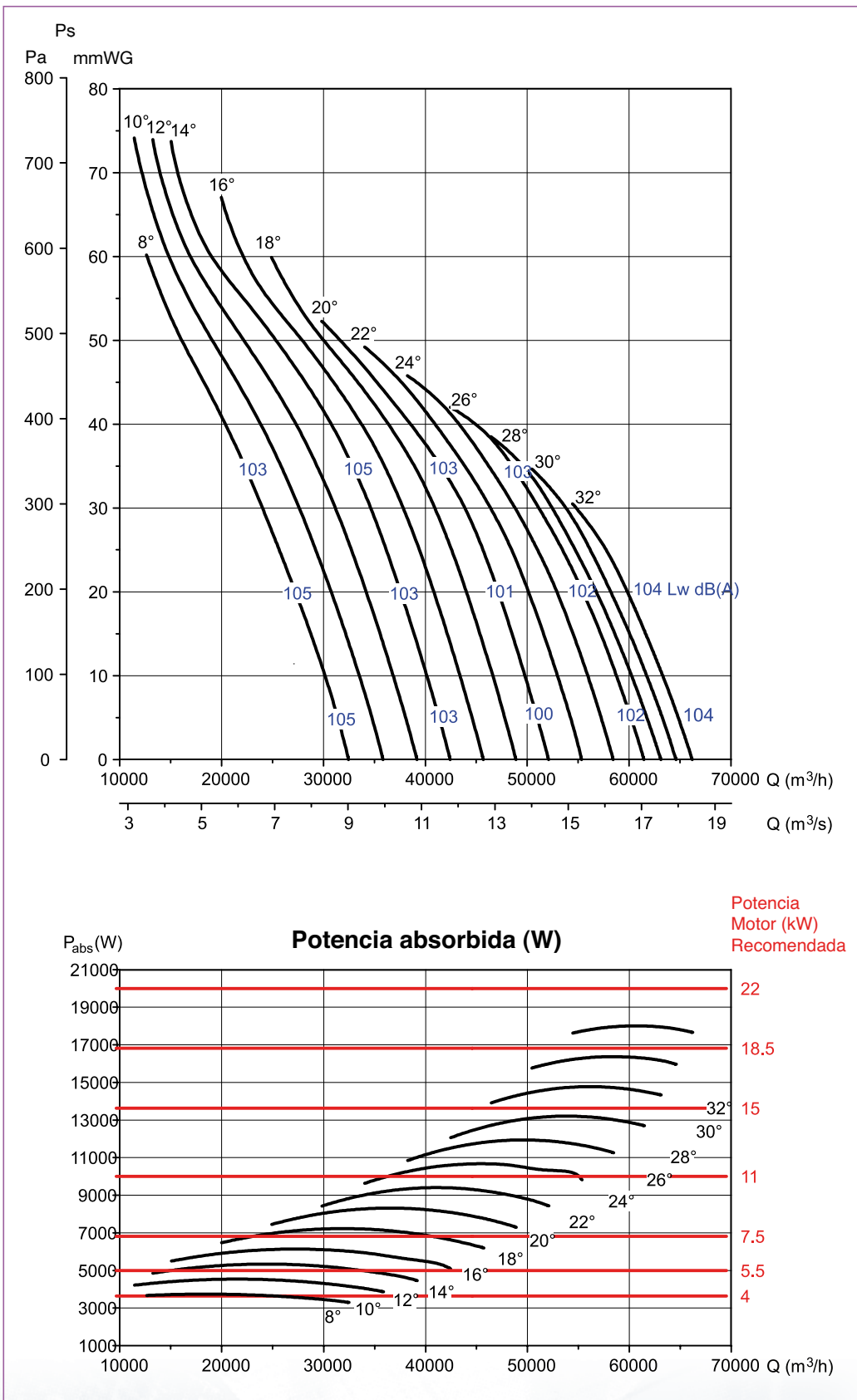
■ Performance curves

- Q = Air volume in m³/h and m³/s.
- Ps = Static pressure in Pa.
- Dry air at 20 °C and 760 mmHg.
- Performance data in accordance with ISO 5801 and AMCA 210-99 Standards

HGTT-V / HGHT-V	
Number of poles	4
Nominal diameter (mm)	1000
Number of blades	6

Hz	K
63	38
125	21
250	9
500	5
1000	5
2000	8
4000	14
8000	23

Table of correction factors for the calculation of the sound power level spectrum.



Performance curves

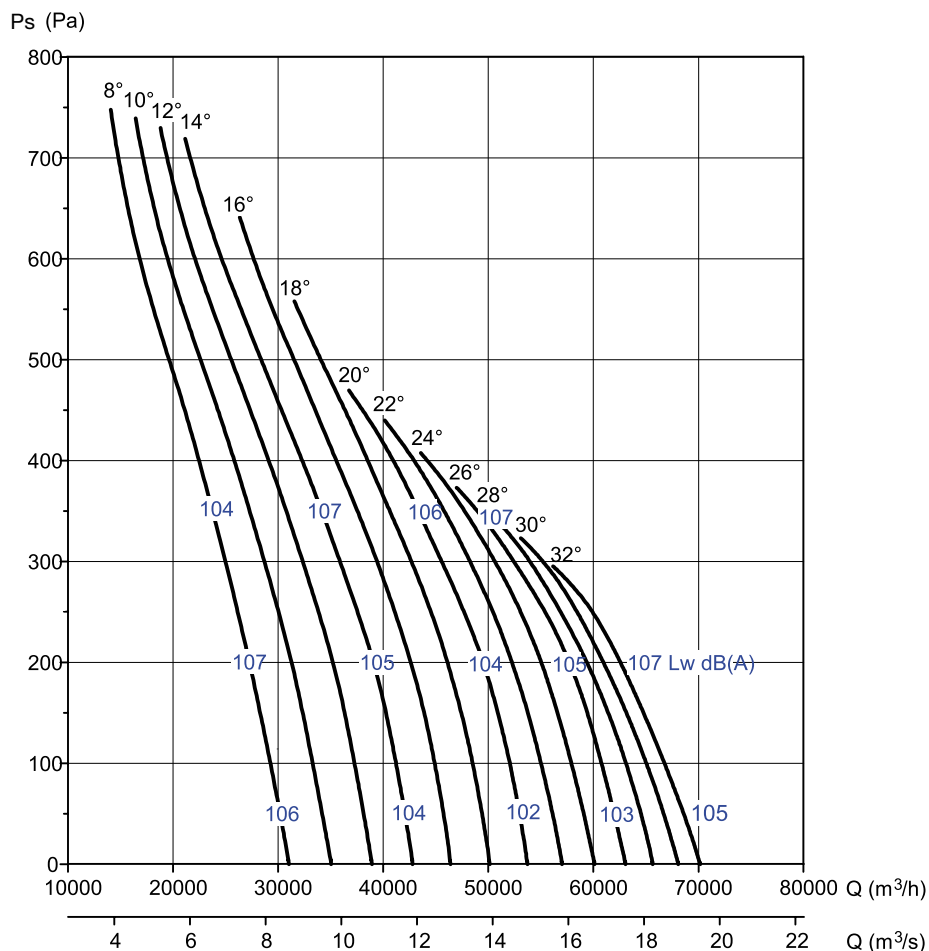
- Q = Air volume in m³/h and m³/s.
- Ps = Static pressure in Pa.
- Dry air at 20 °C and 760 mmHg.
- Performance data in accordance with ISO 5801 and AMCA 210-99 Standards

HGTT-V / HGHT-V

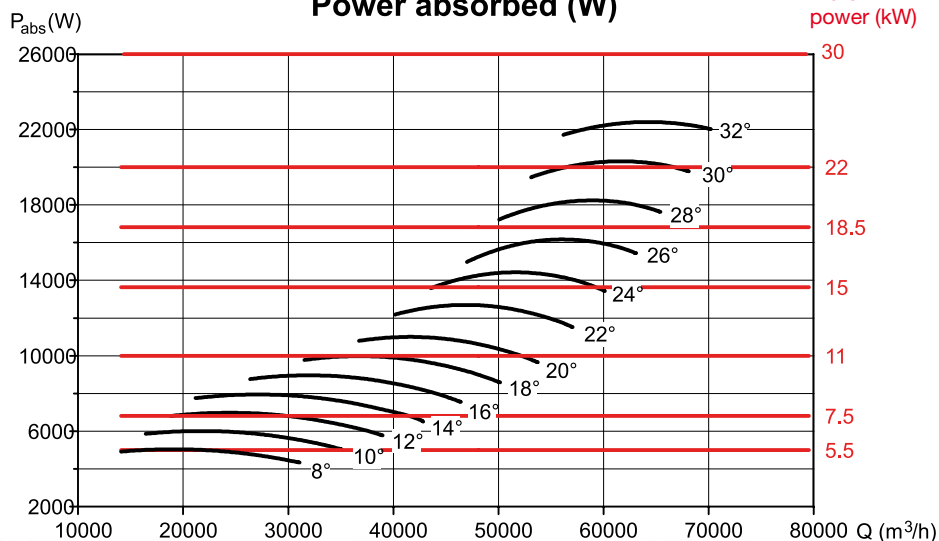
Number of poles	4
Nominal diameter (mm)	1000
Number of blades	9

Hz	K
63	38
125	19
250	9
500	5
1000	5
2000	7
4000	13
8000	21

Table of correction factors for the calculation of the sound power level spectrum.



Power absorbed (W)



Recommended motor power (kW)



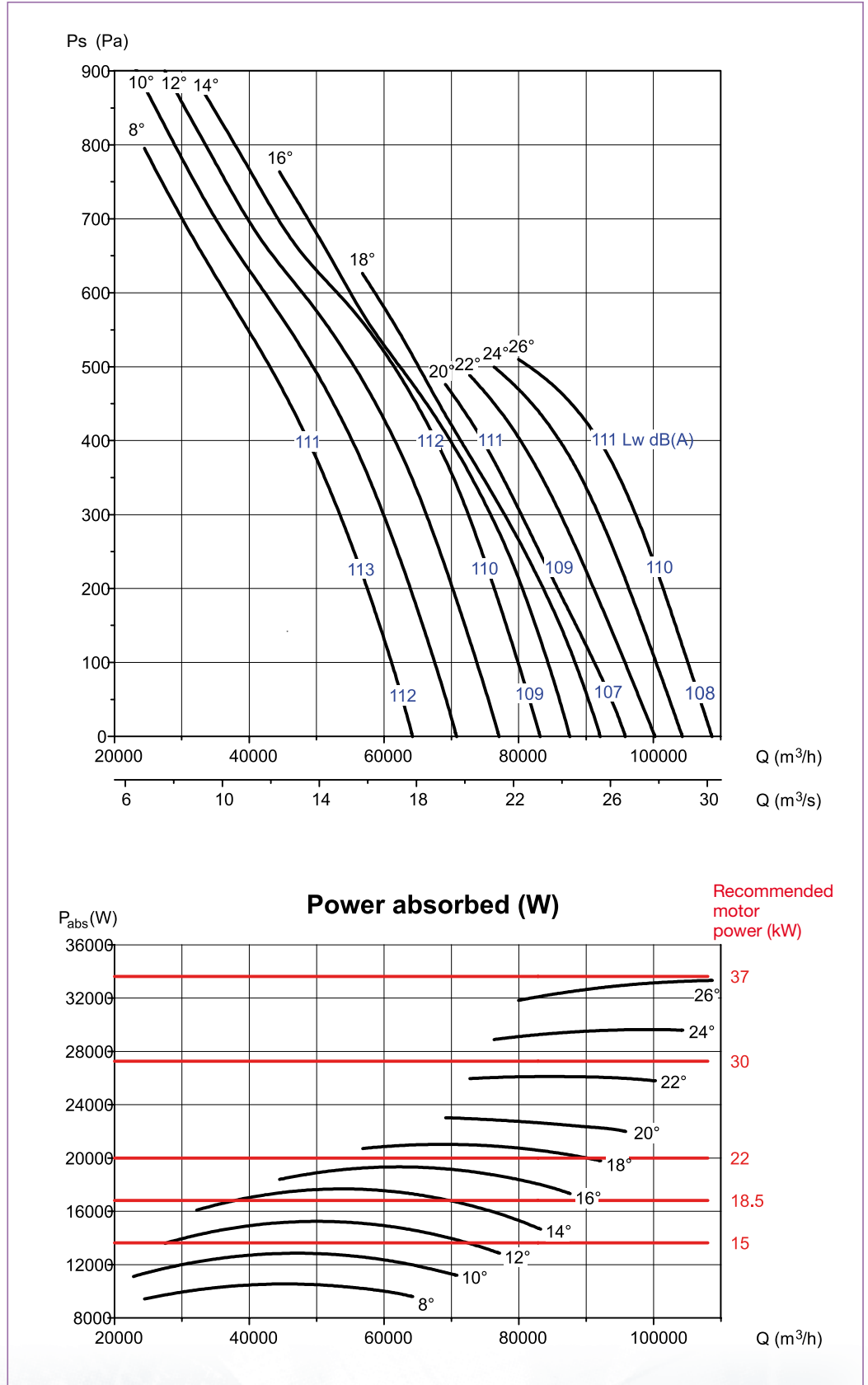
■ Performance curves

- Q = Air volume in m³/h and m³/s.
- Ps = Static pressure in Pa.
- Dry air at 20 °C and 760 mmHg.
- Performance data in accordance with ISO 5801 and AMCA 210-99 Standards

HGTT-V / HGHT-V	
Number of poles	4
Nominal diameter (mm)	1250
Number of blades	6

Hz	K
63	38
125	21
250	9
500	5
1000	5
2000	8
4000	14
8000	23

Table of correction factors for the calculation of the sound power level spectrum.



Performance curves

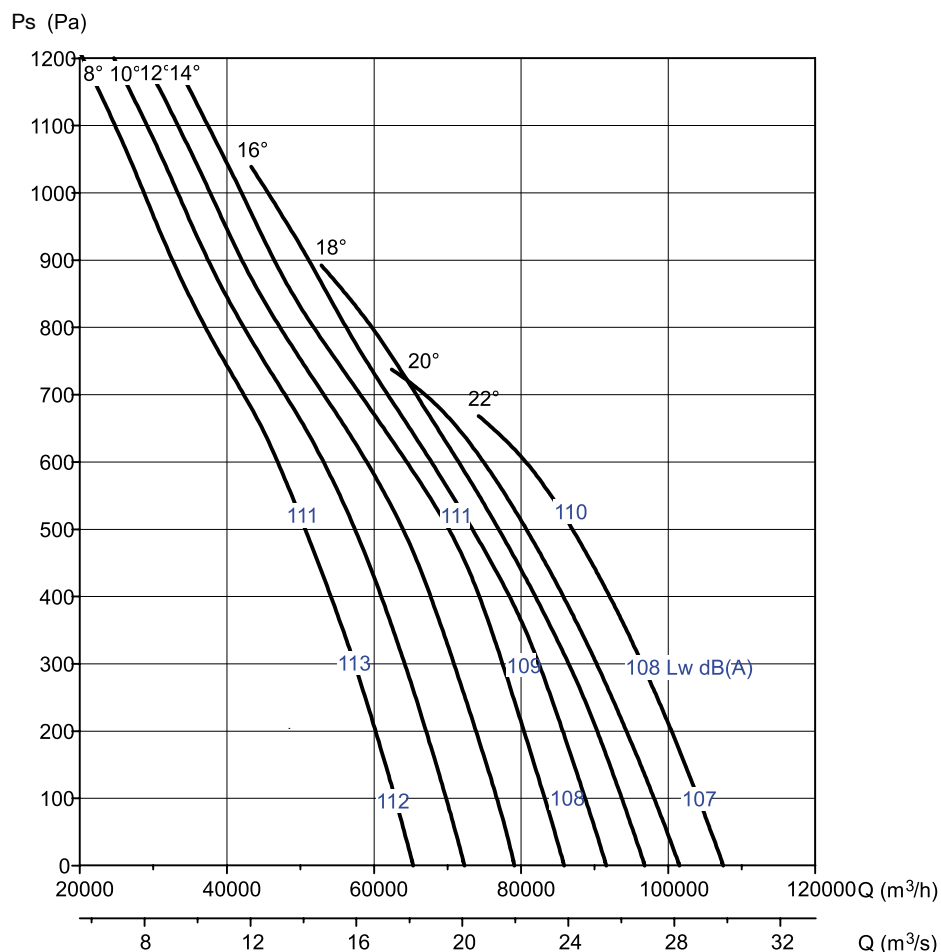
- Q = Air volume in m³/h and m³/s.
- Ps = Static pressure in Pa.
- Dry air at 20 °C and 760 mmHg.
- Performance data in accordance with ISO 5801 and AMCA 210-99 Standards

HGTT-V / HGHT-V

Number of poles	4
Nominal diameter (mm)	1250
Number of blades	9

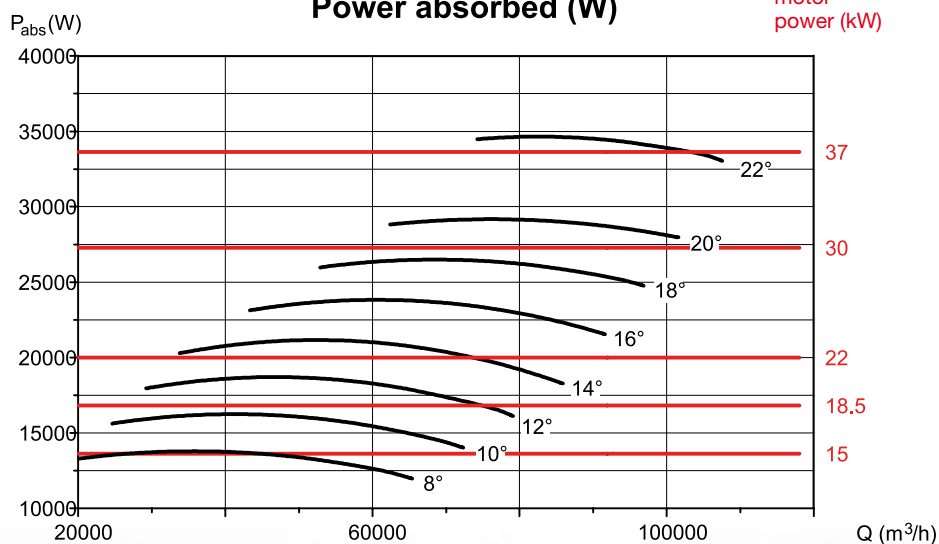
Hz	K
63	38
125	19
250	9
500	5
1000	5
2000	7
4000	13
8000	21

Table of correction factors for the calculation of the sound power level spectrum.



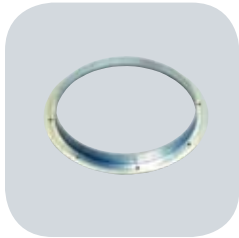
Power absorbed (W)

Recommended motor power (kW)

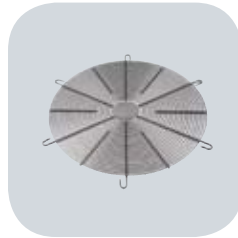


■ Mounting accessories

Model	Matching Flange	Inlet bellmouth	Flexible connector	Inlet guard	Circular sound attenuator	Attenuator with acoustic pod
800	ARO BRIDA TGT/ THGT- 800	EMB- 800T	ACOPEL F400-800/300	DEF. ASP. THGT- 800	SIL CZ 800	SIL CZO 800
900	ARO BRIDA TGT/ THGT- 900	EMB- 900T	ACOPEL F400-900/300	DEF. ASP. THGT- 900	SIL CZ 900	SIL CZO 900
1000	ARO BRIDA TGT/ THGT- 1000	EMB- 1000T	ACOPEL F400-1000/300	DEF. ASP. THGT- 1000	SIL CZ 1000	SIL CZO 1000
1250	ARO BRIDA TGT/ THGT- 1250	EMB- 1250T	ACOPEL F400-1250/300	DEF. ASP. THGT- 1250	SIL CZ 1250	SIL CZO 1250



ARO BRIDA TGT/THGT
Matching flange



DEF.ASP.THGT
Inlet guard



SIL CZ
Circular silencer



ACOPEL F400
Circular flexible connector.
Certified F400-120



EMB
Bellmouth with guard



SIL CZO
Circular silencer with pod

For more information see **MOUNTING ACCESSORIES**.

